

DEFENDER PUMA INTERNAL TRIM KIT

ILLUSTRATED FITTING MANUAL



You will need:

- General workshop tools
- Cleaning sponge or cloth
- Drill
- Angle grinder

DEFENDER

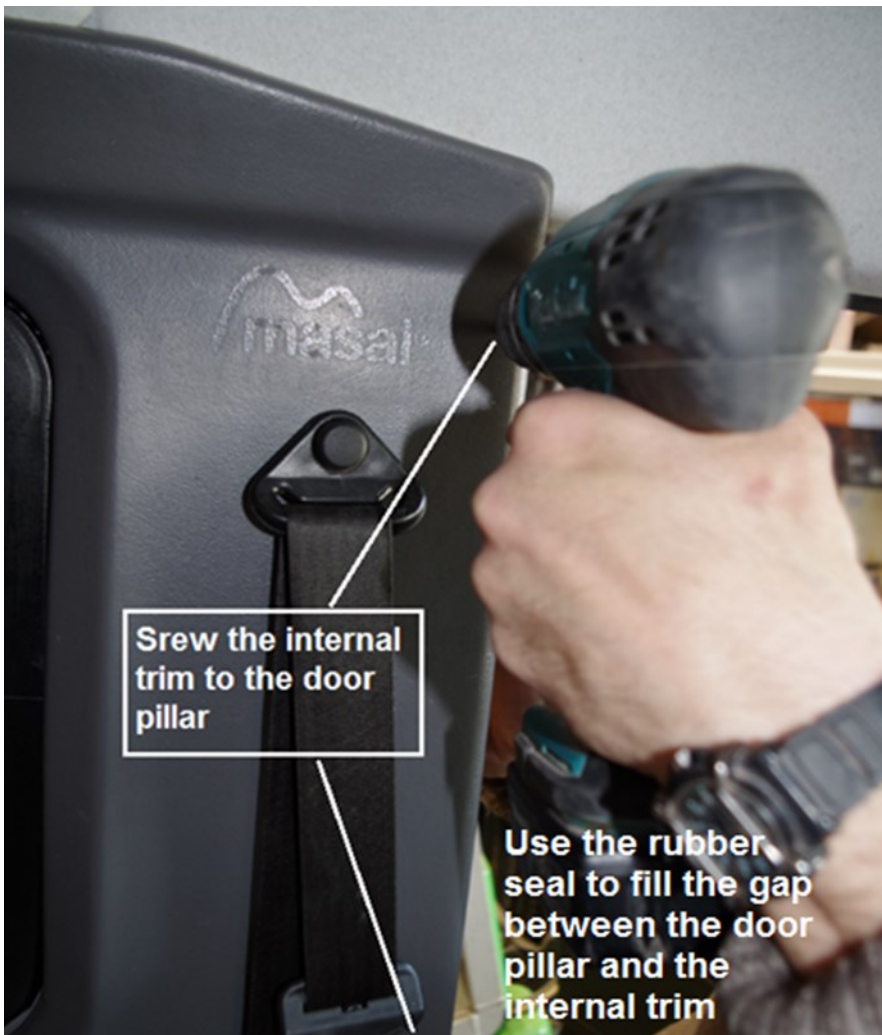
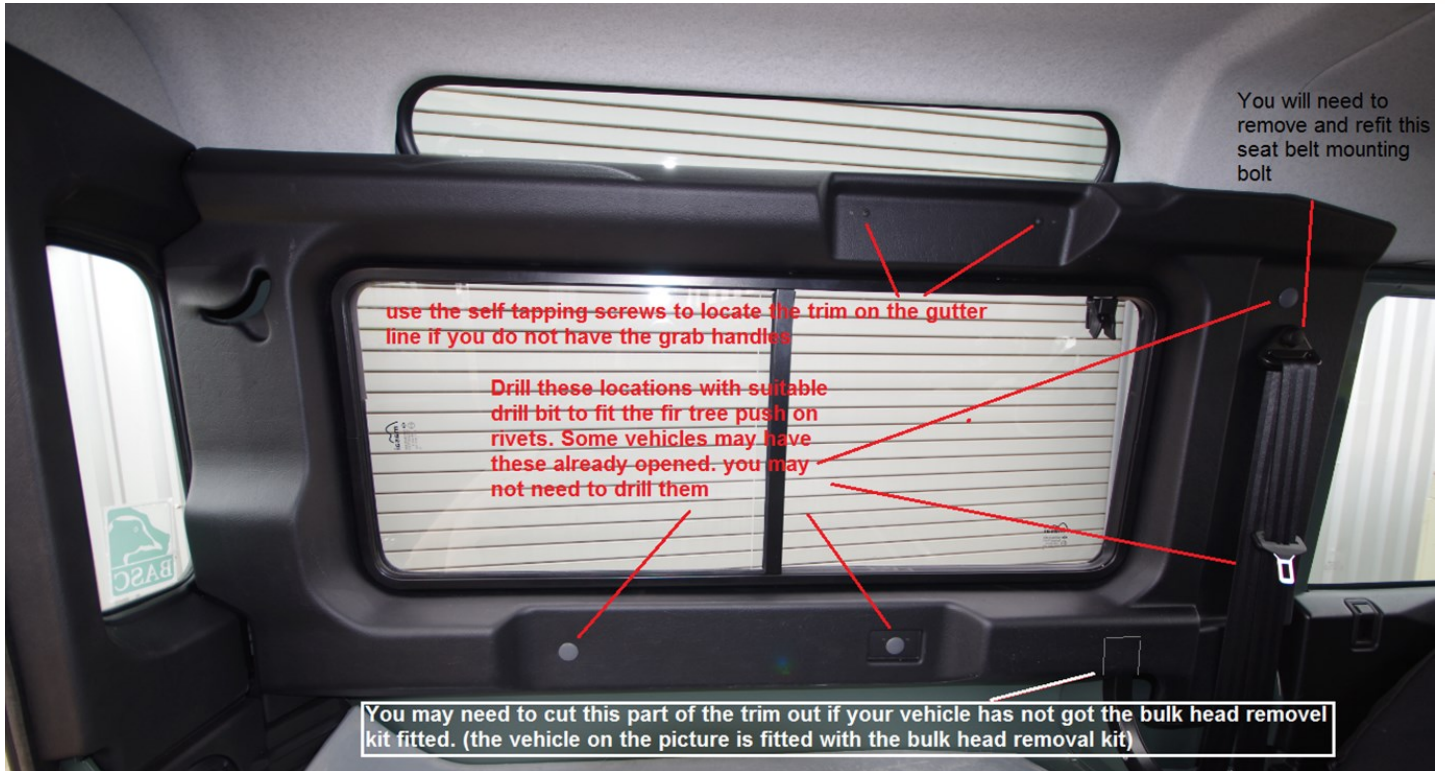
INTERNAL TRIM KIT

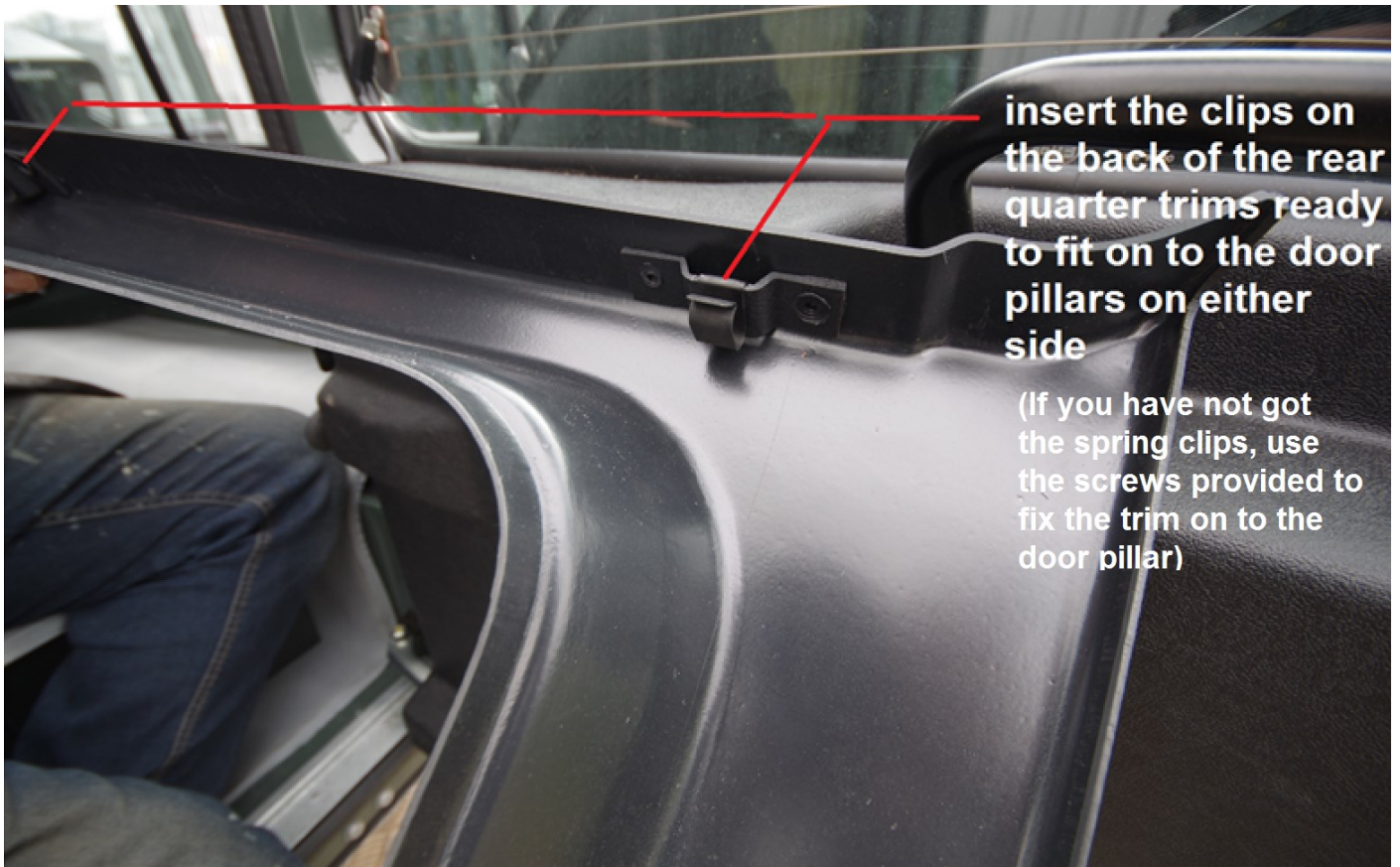
Thank you for purchasing the Masai Defender Internal Trim Kit. Please read these instructions carefully before commencing work.

If you have a panel van and wish to remove the apertures, you may find our online video (found at www.landrover-panoramic.com) helpful. Make sure you have all the tools and other equipment ready before you start, including a table near your vehicle. Please follow widely accepted safety precautions.

Your kit includes:

- Side panels - off and near side
- Rear quarter panels RH and LH Sides
- 16 long screws
- 8 push on fir tree rivets
- Rubber Seals (**Not needed for covered Internal Window Trims**)





insert the clips on the back of the rear quarter trims ready to fit on to the door pillars on either side

(If you have not got the spring clips, use the screws provided to fix the trim on to the door pillar)



Push rear trims in to position.



if you fitted Masai Panoramic Windows to your Defender, you may prefer to use the rubber finishing seal around window trim to give a neater finish. Also the same seal needs to be used on the front where the internal trim meets the door pillars to give a neater finish.



use the rubber seal at the edge of the internal trim to make sure that the gap in between the panel is covered

Customer Feedback

Your feedback is very important to us.

We would love to hear any suggestions or recommendations you may have about the Masai product range. If you have any feedback you think may help us improve the services or products we offer, then please use the details found on the reverse page of this booklet to contact us.

Thank you for choosing Masai.

